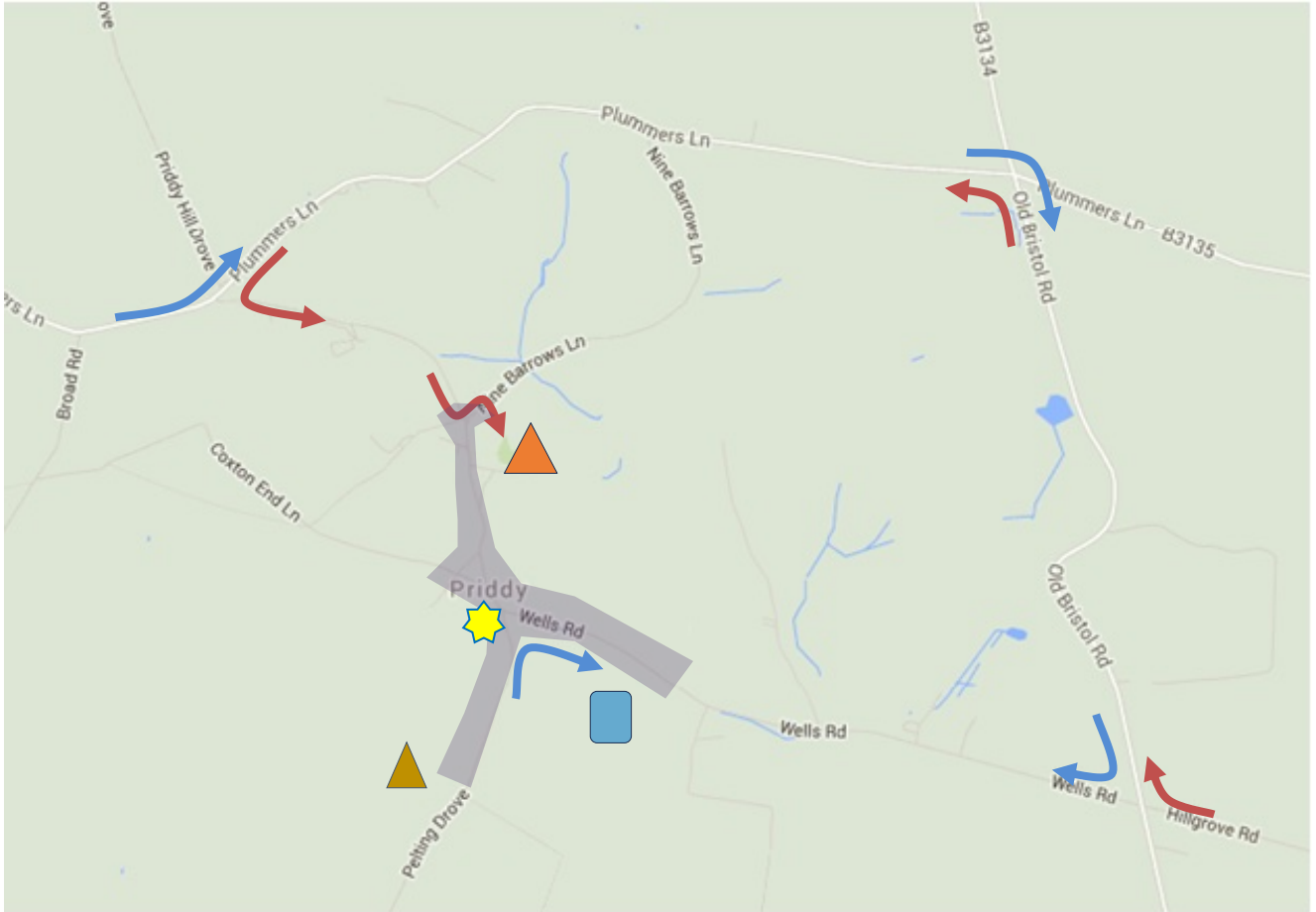





Travelling to the Priddy Folk Festival

Once you reach the outskirts of the village (on B3134 and B3135), you will find yellow road signs directing you to either the campsite or the main car park. Please ignore your SatNav and use these routes, as they help us reduce the number of vehicles crossing the main festival site on the village green.



Key:  Festival Office  Car Park  Camp Site  Eborways Farm

	Route for non-Campers
	Route for Campers
	Area coned for no parking